



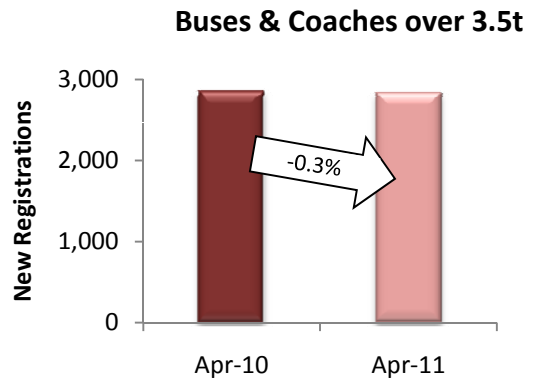
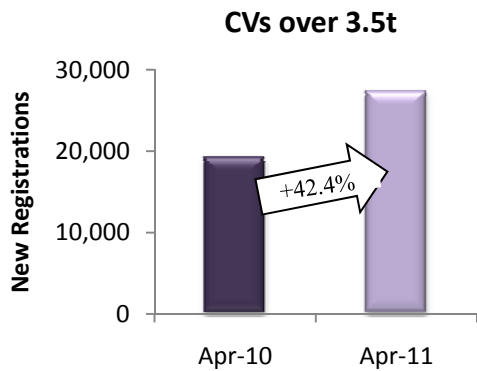
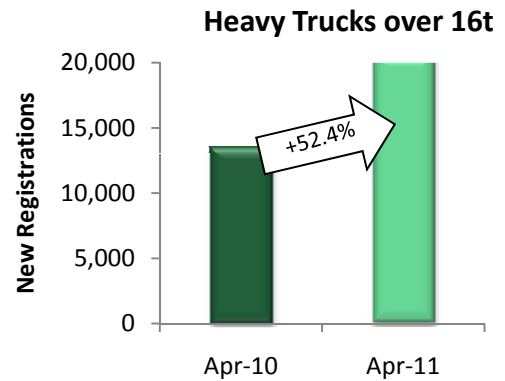
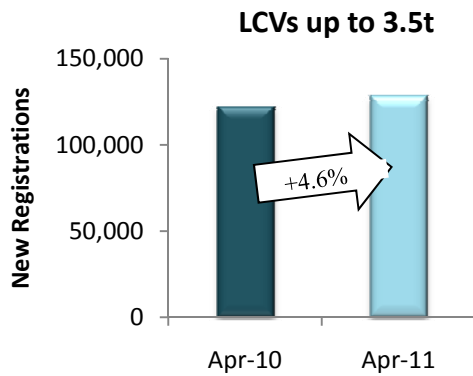
PRESS EMBARGO FOR ALL DATA:
May 27, 2011, 8.00 A.M. (6.00 A.M. GMT)

Press Release

NEW COMMERCIAL VEHICLE REGISTRATIONS

April 2011

EU Countries



Next Press Release: Tuesday, June 28, 2011

COMMERCIAL VEHICLES: registrations up 9.5% in April

New commercial vehicle registrations increased by 9.5%** across the EU* **in April**, compared to the same month last year, which counted on average one more working day. Among the major markets, only France (-3.0%) and Spain (-14.3%) declined while Germany (+12.2%) and the UK expanded (+23.6%). **From January to April**, a total of 657,707 new vehicles** were registered, or 13.5% more** than over the same period a year ago. France (+7.7%) recorded the most vehicles (161,941 units), followed by the UK (104,190) and Germany (103,020) which grew by 28.6% and 25.5% respectively.

New Light Commercial Vehicles up to 3.5t – "vans"

In April, demand for new vans were up 4.6%** in the EU*, amounting to 127,814 units. Of the most significant markets, France (-6.6%) and Spain (-19.0%) faced a downturn, while new registrations increased in Germany (+5.1%) and the UK (+21.4%). **Four months into the year**, new van registrations totaled 543,030 units, or 8.9% more than in the first four months of 2010. France was the largest market and expanded by 4.5%. Germany (+18.9%) and the UK (+29.0%) both posted a double-digit growth, while Spain saw its market contract by 11.3%.

New Heavy Commercial Vehicles over 16t (excluding Buses & Coaches) – "heavy trucks"

The EU* recorded 20,581 new heavy trucks** **in April**. All major markets posted strong growths, leading to an overall 52.4% upturn in the region. The British market expanded by 72.7%, followed by the Netherlands (+62.1%), France (+47.8%), Spain (+32.5%) and Germany (+31.5%). **From January to April**, 78,624 new trucks were registered** in the EU*, or 61.9% more than in the same period last year. Germany (+50.9%) was the biggest market, recording 19,860 units, while France (+62.8%) ranked second with 13,369 new vehicles. The Netherlands (+40.6%) and Spain (+40.7%) performed similarly. The UK saw its demand increase by 79.9%.

New Commercial Vehicles over 3.5t (excluding Buses & Coaches) – "trucks"

The segment of trucks totaled 27,338 new vehicles** in the EU* **in April**, recording a 42.4% increase compared to the same month a year earlier. Growth prevailed across countries, ranging from +56.7% in the Netherlands to +48.8% in the UK, +40.1% in France, +31.3% in Germany and +28.9% in Spain. Greece was the only country to record a downturn (-45.5%). **Over the first four months**, the most significant markets performed similarly as demand for new trucks grew by 36.2% in the Netherlands, 40.8% in Spain, 43.3% in the UK, 45.4% in Germany and 52.2% in France. Overall, new truck registrations increased by 48.7%, totaling 103,935 units.

New Buses & Coaches over 3.5t

The category of buses and coaches slipped by 0.3% **in April** ** as the Spanish (+56.7%) and German (+14.4%) markets expanded while new registrations were down in France (-18.3%) and the UK (-10.7%). **From January to April**, the EU* recorded 10,742 new buses and coaches, or 1.3% less than in the same period in 2010. The UK and France remained the largest markets despite a downturn of 28.2% and 13.6% respectively. The German market was stable (+0.5%), while the Spanish expanded by 66.4%.

* Data for Cyprus and Malta are unavailable

** Due to the unavailability of data from Italy since January 2011, figures reported for that country are an extrapolation made by data provider AAA. They are not actual market figures, hence the possibility of an error margin with regard to the EU totals. Italy usually accounts for 10 to 15% of the EU Commercial Vehicle market.



ACEA

Association des
Constructeurs
Européens
d'Automobiles

Av. des Nerviens 85
B-1040 Bruxelles

Tel (32 2) 732 55 50
Fax (32 2) 738 73 10
(32 2) 738 73 11

Press Release

**PRESS EMBARGO FOR ALL DATA :
8.00 A.M.(6.00 A.M. GMT), May 27, 2011**

PROVISIONAL EU' COUNTRIES REGISTRATION FIGURES BY MARKET NEW LIGHT COMMERCIAL VEHICLES up to 3.5t²

27/5/11

	April '11	April '10	% Change	Jan-Apr '11	Jan-Apr '10	% Change
AUSTRIA	2,695	2,683	0.4%	10,304	8,490	21.4%
BELGIUM	5,941	5,325	11.6%	24,064	20,522	17.3%
BULGARIA	226	195	15.9%	745	795	-6.3%
CZECH REPUBLIC	995	1,000	-0.5%	3,678	3,386	8.6%
DENMARK	1,633	1,182	38.2%	7,011	4,812	45.7%
ESTONIA	182	79	130.4%	565	294	92.2%
FINLAND	1,085	810	34.0%	4,597	3,176	44.7%
FRANCE	33,916	36,303	-6.6%	143,612	137,444	4.5%
GERMANY	17,804	16,945	5.1%	70,101	58,980	18.9%
GREECE	458	742	-38.3%	2,357	4,990	-52.8%
HUNGARY	744	608	22.4%	3,085	2,299	34.2%
IRELAND	1,125	809	39.1%	6,093	5,817	4.7%
ITALY ³	17,220	13,537	27.2%	69,865	74,231	-5.9%
LATVIA	78	40	95.0%	291	121	140.5%
LITHUANIA	163	57	186.0%	507	144	252.1%
LUXEMBURG	260	295	-11.9%	1,126	1,047	7.5%
NETHERLANDS	4,781	4,027	18.7%	23,696	19,226	23.2%
POLAND	3,208	3,113	3.1%	12,079	10,822	11.6%
PORTUGAL	2,784	3,828	-27.3%	11,480	13,775	-16.7%
ROMANIA	601	502	19.7%	2,315	1,306	77.3%
SLOVAKIA	460	424	8.5%	1,690	2,947	-42.7%
SLOVENIA	575	416	38.2%	2,249	1,636	37.5%
SPAIN	8,993	11,106	-19.0%	36,808	41,487	-11.3%
SWEDEN	3,806	3,255	16.9%	14,290	10,963	30.3%
UNITED KINGDOM	18,081	14,891	21.4%	90,422	70,106	29.0%
EUROPEAN UNION¹	127,814	122,172	4.6%	543,030	498,816	8.9%
EU 15	120,582	115,738	4.2%	515,826	475,066	8.6%
EU 10	7,232	6,434	12.4%	27,204	23,750	14.5%
ICELAND	25	14	78.6%	77	71	8.5%
NORWAY	2,592	2,727	-5.0%	10,892	9,314	16.9%
SWITZERLAND	2,437	2,170	12.3%	9,431	7,981	18.2%
EFTA	5,054	4,911	2.9%	20,400	17,366	17.5%
EU27 + EFTA	132,868	127,083	4.6%	563,430	516,182	9.2%
EU15 + EFTA	125,636	120,649	4.1%	536,226	492,432	8.9%

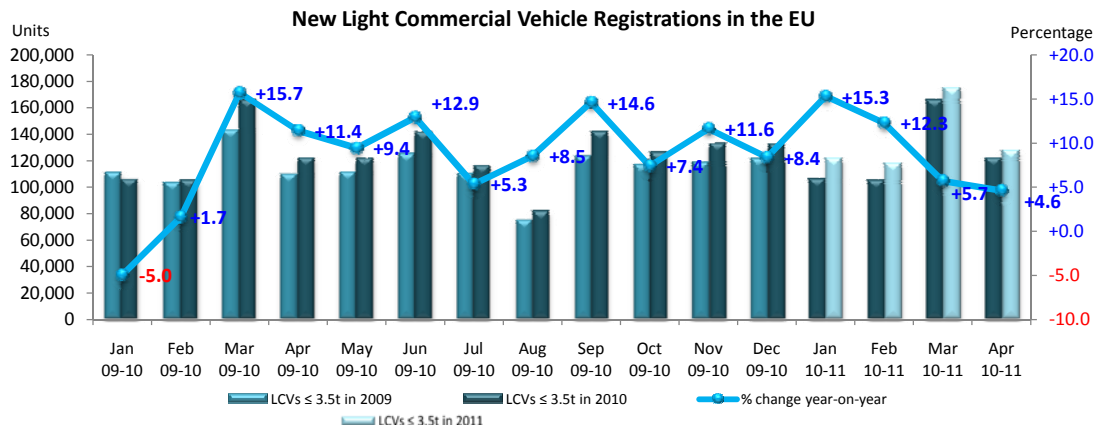
(¹) EU27 including Bulgaria and Romania; data for Malta and Cyprus currently not available.

(²) including Buses & Coaches

(³) Due to the unavailability of data from Italy since January 2011, figures reported for that country are an extrapolation made by data provider AAA.

They are not actual market figures, hence the possibility of an error margin with regard to the EU totals.

For further information, please call: Ms. Quynh-Nhu Huynh - Manager Economics & Communications - Tel. + 32 2 738 73 55



This information is available on the ACEA website:

<http://www.acea.be>

Next Press Release on Commercial Vehicles to be issued on June 28, 2011



ACEA

Association des
Constructeurs
Européens
d'Automobiles

Av. des Nerviens 85
B-1040 Bruxelles

Tel (32 2) 732 55 50
Fax (32 2) 738 73 10
(32 2) 738 73 11

Press Release

**PRESS EMBARGO FOR ALL DATA :
8.00 A.M.(6.00 A.M. GMT), May 27, 2011**

PROVISIONAL

EU¹ + EFTA COUNTRIES REGISTRATION FIGURES BY MARKET NEW HEAVY COMMERCIAL VEHICLES of 16t and over²

27/5/11

	April '11	April '10	% Change	Jan-Apr '11	Jan-Apr '10	% Change
AUSTRIA	692	465	48.8%	2,300	1,446	59.1%
BELGIUM	687	466	47.4%	3,182	2,018	57.7%
BULGARIA	155	31	400.0%	366	83	341.0%
CZECH REPUBLIC ³	551	264	108.7%	1,792	924	93.9%
DENMARK	314	143	119.6%	1,174	531	121.1%
ESTONIA	59	14	321.4%	227	54	320.4%
FINLAND	182	141	29.1%	776	581	33.6%
FRANCE	3,460	2,341	47.8%	13,369	8,214	62.8%
GERMANY	5,283	4,019	31.5%	19,860	13,164	50.9%
GREECE	29	30	-3.3%	116	214	-45.8%
HUNGARY	216	111	94.6%	1,062	465	128.4%
IRELAND	77	35	120.0%	348	266	30.8%
ITALY ⁴	1,155	959	20.4%	4,707	3,896	20.8%
LATVIA	75	14	435.7%	365	58	529.3%
LITHUANIA ⁵	231	86	168.6%	948	206	360.2%
LUXEMBURG ⁵	127	54	135.2%	412	223	84.8%
NETHERLANDS	1,188	733	62.1%	4,294	3,053	40.6%
POLAND	1,213	575	111.0%	4,601	1,987	131.6%
PORTUGAL	246	143	72.0%	959	617	55.4%
ROMANIA	327	147	122.4%	1,003	394	154.6%
SLOVAKIA	226	101	123.8%	1,061	419	153.2%
SLOVENIA ⁵	117	42	178.6%	473	176	168.8%
SPAIN	1,129	852	32.5%	5,043	3,584	40.7%
SWEDEN	481	372	29.3%	1,643	1,235	33.0%
UNITED KINGDOM	2,361	1,367	72.7%	8,543	4,749	79.9%
EUROPEAN UNION¹	20,581	13,505	52.4%	78,624	48,557	61.9%
EUROPEAN UNION (EU15)	17,411	12,120	43.7%	66,726	43,791	52.4%
EU (New Members)	3,170	1,385	128.9%	11,898	4,766	149.6%
ICELAND	1	2	-50.0%	5	7	-28.6%
NORWAY ⁵	225	208	8.2%	1,014	734	38.1%
SWITZERLAND ³	276	267	3.4%	1,123	898	25.1%
EFTA	502	477	5.2%	2,142	1,639	30.7%
TOTAL EUROPE (EU+EFTA)	21,083	13,982	50.8%	80,766	50,196	60.9%
EU15+EFTA	17,913	12,597	42.2%	68,868	45,430	51.6%

(¹) EU27 including Bulgaria and Romania; data for Malta and Cyprus currently not available.

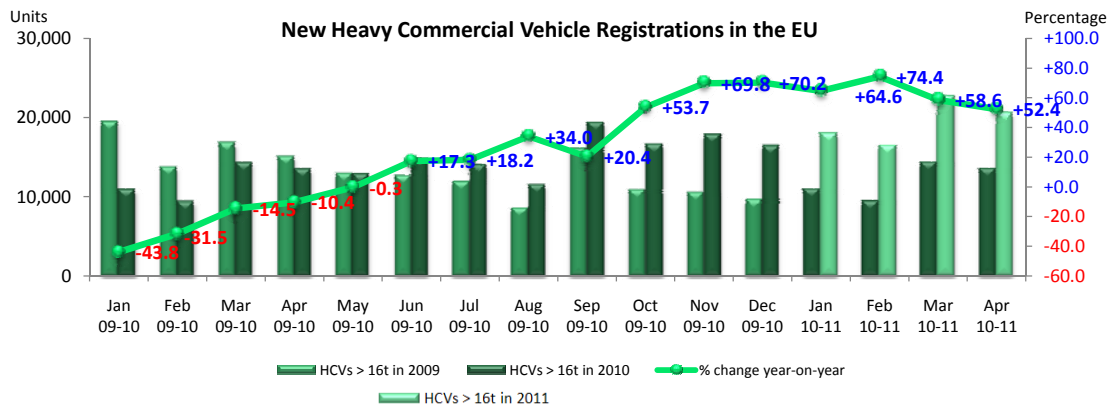
(²) Excluding Buses and Coaches

(³) CV ≥ 18t

(⁴) Due to the unavailability of data from Italy since January 2011, figures reported for that country are an extrapolation made by data provider AAA. They are not actual market figures, hence the possibility of an error margin with regard to the EU totals.

(⁵) estimates

For further information, please call: Ms. Quynh-Nhu Huynh - Manager Economics & Communications - Tel. + 32 2 738 73 55



This information is available on the ACEA website:
<http://www.acea.be>



ACEA

Association des
Constructeurs
Européens
d'Automobiles

Av. des Nerviens 85
B-1040 Bruxelles

Tel (32 2) 732 55 50
Fax (32 2) 738 73 10
(32 2) 738 73 11

Press Release

**PRESS EMBARGO FOR ALL DATA :
8.00 A.M.(6.00 A.M. GMT), May 27, 2011**

PROVISIONAL

EU¹ + EFTA COUNTRIES REGISTRATION FIGURES BY MARKET NEW MEDIUM & HEAVY COMMERCIAL VEHICLES over 3.5t²

27/5/11

	April '11	April '10	% Change	Jan-Apr '11	Jan-Apr '10	% Change
AUSTRIA	725	517	40.2%	2,509	1,609	55.9%
BELGIUM	864	618	39.8%	3,906	2,824	38.3%
BULGARIA	164	47	248.9%	412	177	132.8%
CZECH REPUBLIC	658	419	57.0%	2,284	1,361	67.8%
DENMARK	349	177	97.2%	1,291	696	85.5%
ESTONIA	67	18	272.2%	247	62	298.4%
FINLAND	267	207	29.0%	1,121	830	35.1%
FRANCE	4,437	3,166	40.1%	16,699	10,974	52.2%
GERMANY	8,296	6,317	31.3%	31,389	21,593	45.4%
GREECE	55	101	-45.5%	211	559	-62.3%
HUNGARY	248	138	79.7%	1,159	551	110.3%
IRELAND	125	77	62.3%	475	456	4.2%
ITALY ⁴	1,699	1,487	14.3%	6,885	5,917	16.4%
LATVIA	84	16	425.0%	386	66	484.8%
LITHUANIA ³	240	88	172.7%	976	218	347.7%
LUXEMBURG	139	57	143.9%	446	243	83.5%
NETHERLANDS	1,346	859	56.7%	4,900	3,597	36.2%
POLAND	1,461	756	93.3%	5,328	2,447	117.7%
PORTUGAL	327	207	58.0%	1,232	846	45.6%
ROMANIA	351	182	92.9%	1,140	531	114.7%
SLOVAKIA	264	145	82.1%	1,275	540	136.1%
SLOVENIA ³	134	52	157.7%	532	226	135.4%
SPAIN	1,185	919	28.9%	5,384	3,824	40.8%
SWEDEN	555	417	33.1%	1,864	1,442	29.3%
UNITED KINGDOM	3,298	2,216	48.8%	11,884	8,291	43.3%
EUROPEAN UNION¹	27,338	19,203	42.4%	103,935	69,880	48.7%
EUROPEAN UNION (EU15)	23,667	17,342	36.5%	90,196	63,701	41.6%
EU (New Members)	3,671	1,861	97.3%	13,739	6,179	122.3%
ICELAND	4	3	33.3%	10	12	-16.7%
NORWAY	443	389	13.9%	1,594	1,261	26.4%
SWITZERLAND	359	363	-1.1%	1,428	1,186	20.4%
EFTA	806	755	6.8%	3,032	2,459	23.3%
TOTAL EUROPE (EU+EFTA)	28,144	19,958	41.0%	106,967	72,339	47.9%
EU15+EFTA	24,473	18,097	35.2%	93,228	66,160	40.9%

(¹) EU27 including Bulgaria and Romania; data for Malta and Cyprus currently not available.

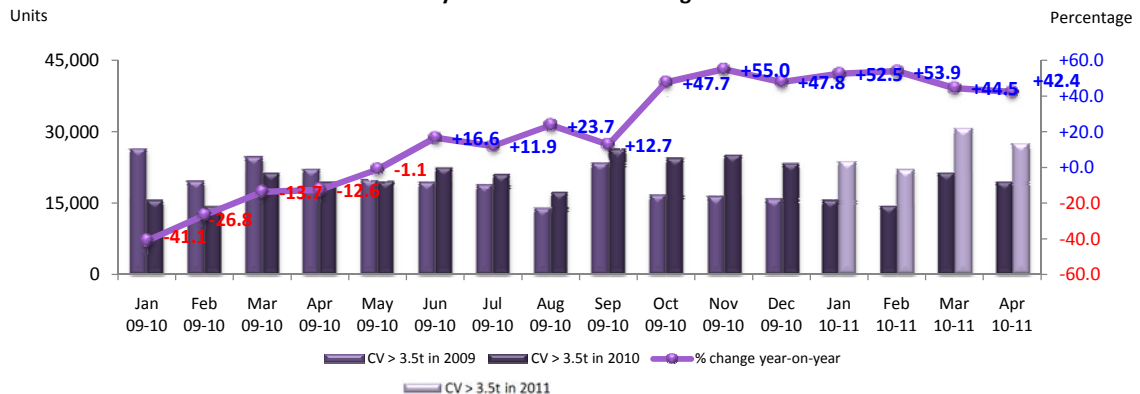
(²) Excluding Buses and Coaches

(³) estimates

(⁴) Due to the unavailability of data from Italy since January 2011, figures reported for that country are an extrapolation made by data provider AAA. They are not actual market figures, hence the possibility of an error margin with regard to the EU totals.

For further information, please call: Ms. Quynh-Nhu Huynh - Manager Economics & Communications - Tel. + 32 2 738 73 55

New Medium & Heavy Commercial Vehicle Registrations in the EU



This information is available on the ACEA website:

<http://www.acea.be>



ACEA

Association des
Constructeurs
Européens
d'Automobiles

Av. des Nerviens 85
B-1040 Bruxelles

Tel (32 2) 732 55 50
Fax (32 2) 738 73 10
(32 2) 738 73 11

Press Release

**PRESS EMBARGO FOR ALL DATA :
8.00 A.M.(6.00 A.M. GMT), May 27, 2011**

PROVISIONAL

EU¹ + EFTA COUNTRIES REGISTRATION FIGURES BY MARKET NEW MEDIUM & HEAVY BUSES & COACHES over 3.5t

27/5/11

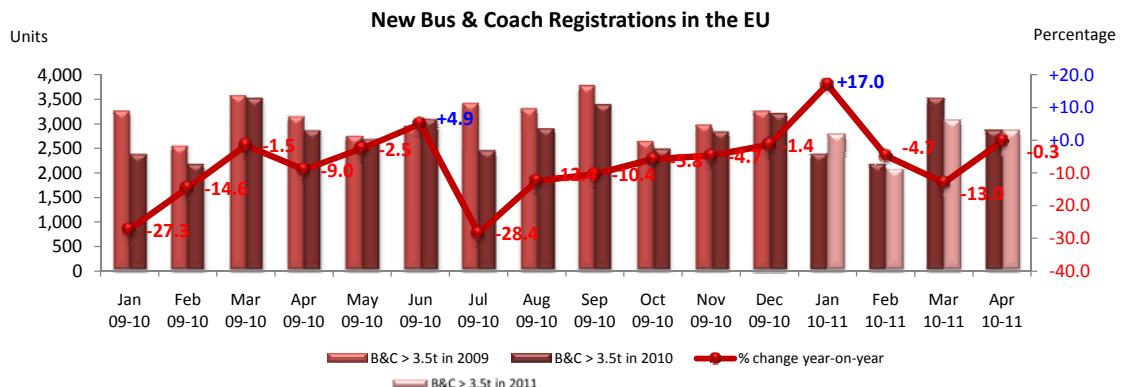
	April '11	April '10	% Change	Jan-Apr '11	Jan-Apr '10	% Change
AUSTRIA	81	103	-21.4%	221	292	-24.3%
BELGIUM	80	72	11.1%	323	331	-2.4%
BULGARIA	2	1	100.0%	4	31	-87.1%
CZECH REPUBLIC	56	43	30.2%	180	136	32.4%
DENMARK	30	37	-18.9%	100	151	-33.8%
ESTONIA	0	3	-100.0%	8	7	14.3%
FINLAND	25	47	-46.8%	103	181	-43.1%
FRANCE	366	448	-18.3%	1,630	1,886	-13.6%
GERMANY	494	432	14.4%	1,530	1,522	0.5%
GREECE	6	7	-14.3%	36	40	-10.0%
HUNGARY	17	10	70.0%	65	71	-8.5%
IRELAND	5	6	-16.7%	40	34	17.6%
ITALY ³	493	376	31.1%	2,029	1,488	36.4%
LATVIA	15	1	1400.0%	65	4	1525.0%
LITHUANIA ²	4	9	-55.6%	10	10	0.0%
LUXEMBURG	24	20	20.0%	99	103	-3.9%
NETHERLANDS	24	85	-71.8%	158	182	-13.2%
POLAND	80	102	-21.6%	397	305	30.2%
PORTUGAL	32	54	-40.7%	167	192	-13.0%
ROMANIA	5	34	-85.3%	31	149	-79.2%
SLOVAKIA	20	40	-50.0%	46	126	-63.5%
SLOVENIA ²	11	6	83.3%	40	60	-33.3%
SPAIN	282	180	56.7%	1,138	684	66.4%
SWEDEN	96	69	39.1%	438	279	57.0%
UNITED KINGDOM	595	666	-10.7%	1,884	2,625	-28.2%
EUROPEAN UNION¹	2,843	2,851	-0.3%	10,742	10,889	-1.3%
EUROPEAN UNION (EU15)	2,633	2,602	1.2%	9,896	9,990	-0.9%
EU (New Members)	210	249	-15.7%	846	899	-5.9%
ICELAND	6	1	500.0%	11	6	83.3%
NORWAY	56	71	-21.1%	285	311	-8.4%
SWITZERLAND	36	31	16.1%	132	140	-5.7%
EFTA	98	103	-4.9%	428	457	-6.3%
TOTAL EUROPE (EU+EFTA)	2,941	2,954	-0.4%	11,170	11,346	-1.6%
EU15+EFTA	2,731	2,705	1.0%	10,324	10,447	-1.2%

(¹) EU27 including Bulgaria and Romania; data for Malta and Cyprus currently not available.

(²) estimates

(³) Due to the unavailability of data from Italy since January 2011, figures reported for that country are an extrapolation made by data provider AAA. They are not actual market figures, hence the possibility of an error margin with regard to the EU totals.

For further information, please call: Ms. Quynh-Nhu Huynh - Manager Economics & Communications - Tel. + 32 2 738 73 55



This information is available on the ACEA website:

<http://www.acea.be>



ACEA

Association des
Constructeurs
Européens
d'Automobiles

Av. des Nerviens 85
B-1040 Bruxelles

Tel (32 2) 732 55 50
Fax (32 2) 738 73 10
(32 2) 738 73 11

Press Release

**PRESS EMBARGO FOR ALL DATA :
8.00 A.M.(6.00 A.M. GMT), May 27, 2011**

PROVISIONAL

EU' + EFTA COUNTRIES REGISTRATION FIGURES BY MARKET TOTAL NEW COMMERCIAL VEHICLES

27/5/11

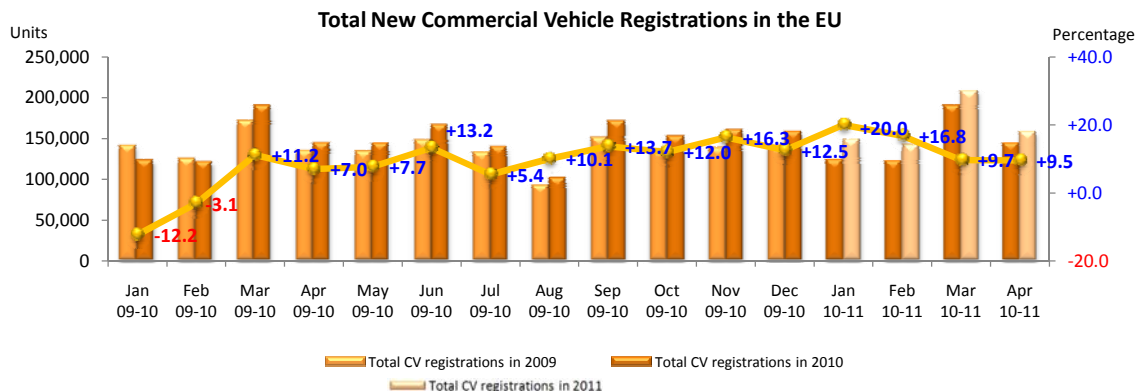
	April '11	April '10	% Change	Jan-Apr '11	Jan-Apr '10	% Change
AUSTRIA	3,501	3,303	6.0%	13,034	10,391	25.4%
BELGIUM	6,885	6,015	14.5%	28,293	23,677	19.5%
BULGARIA	392	243	61.3%	1,161	1,003	15.8%
CZECH REPUBLIC	1,709	1,462	16.9%	6,142	4,883	25.8%
DENMARK	2,012	1,396	44.1%	8,402	5,659	48.5%
ESTONIA	249	100	149.0%	820	363	125.9%
FINLAND	1,377	1,064	29.4%	5,821	4,187	39.0%
FRANCE	38,719	39,917	-3.0%	161,941	150,304	7.7%
GERMANY	26,594	23,694	12.2%	103,020	82,095	25.5%
GREECE	519	850	-38.9%	2,604	5,589	-53.4%
HUNGARY	1,009	756	33.5%	4,309	2,921	47.5%
IRELAND	1,255	892	40.7%	6,608	6,307	4.8%
ITALY ²	19,412	15,400	26.1%	78,779	81,636	-3.5%
LATVIA	177	57	210.5%	742	191	288.5%
LITHUANIA	407	154	164.3%	1,493	372	301.3%
LUXEMBURG	423	372	13.7%	1,671	1,393	20.0%
NETHERLANDS	6,151	4,971	23.7%	28,754	23,005	25.0%
POLAND	4,749	3,971	19.6%	17,804	13,574	31.2%
PORTUGAL	3,143	4,089	-23.1%	12,879	14,813	-13.1%
ROMANIA	957	718	33.3%	3,486	1,986	75.5%
SLOVAKIA	744	609	22.2%	3,011	3,613	-16.7%
SLOVENIA	720	474	51.9%	2,821	1,922	46.8%
SPAIN	10,460	12,205	-14.3%	43,330	45,995	-5.8%
SWEDEN	4,457	3,741	19.1%	16,592	12,684	30.8%
UNITED KINGDOM	21,974	17,773	23.6%	104,190	81,022	28.6%
EUROPEAN UNION¹	157,995	144,226	9.5%	657,707	579,585	13.5%
EUROPEAN UNION (EU15)	146,882	135,682	8.3%	615,918	548,757	12.2%
EU (New Members)	11,113	8,544	30.1%	41,789	30,828	35.6%
ICELAND	35	18	94.4%	98	89	10.1%
NORWAY	3,091	3,187	-3.0%	12,771	10,886	17.3%
SWITZERLAND	2,832	2,564	10.5%	10,991	9,307	18.1%
EFTA	5,958	5,769	3.3%	23,860	20,282	17.6%
TOTAL EUROPE (EU+EFTA)	163,953	149,995	9.3%	681,567	599,867	13.6%
EU15+EFTA	152,840	141,451	8.1%	639,778	569,039	12.4%

(¹) EU27 including Bulgaria and Romania; data for Malta and Cyprus currently not available.

(²) Due to the unavailability of data from Italy since January 2011, figures reported for that country are an extrapolation made by data provider AAA. They are not actual market figures, hence the possibility of an error margin with regard to the EU totals.

(*) estimates

For further information, please call: Ms. Quynh-Nhu Huynh - Manager Economics & Communications - Tel. + 32 2 738 73 55



This information is available on the ACEA website:

<http://www.acea.be>